



Strategy Runner/ Trade Station Bridge Installation Procedure:

Prerequisites:

- Trade Station 8.0 or above must be installed on your computer
- Strategy Runner Console Ver 3.2 and above
- On your first activation, please make sure that both SR console and TS are in flat situation (no open positions)
- Make sure you have at least one workspace opened and saved in your Trade Station console
- Make sure you already configured "Analysis techniques" and have existing "Strategy" in "Trade Station"

Please Note: you have to repeat the following process for each chart you wishes to add

Step 1: configuring Strategy Runner Console



1. On your desktop, double click on the "**Strategy Runner**" icon.
2. Click the "**Settings**" button, and enter *Server Name* as instructed in the confirmation e-mail you have received (this needs to be done only once).
3. Enter your login and password, (as found in your **Strategy Runner** welcome email)
4. In the **Strategy Runner** Console, select the contracts as you intend to trade within Trade Station from the "manage contract list".

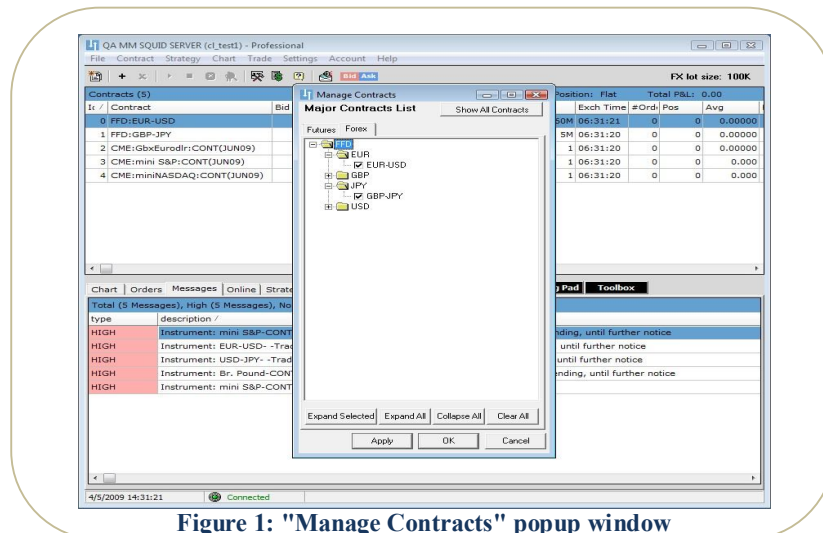


Figure 1: "Manage Contracts" popup window

5. In the **Strategy Runner** Console menu, go to "Setting" → "System Option".
6. In the opened **Settings** window select the "Automation" tab and click "Connect".

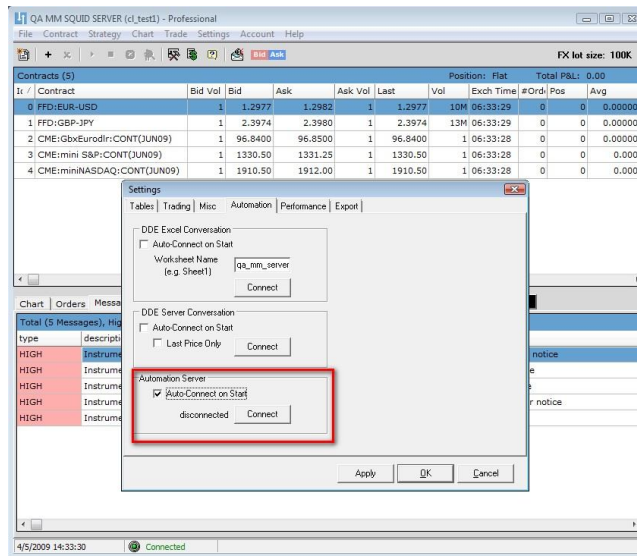


Figure 2: "Settings" window

Step 2: configuring Trade Station

1. Open **Trade Station** and go to the installation directory and then to program directory (e.g. C:\Program Files\TradeStation X.X (Build XXXX)\Program)
2. Double click on "SRPOSITIONDLL2.ELD" and complete "Import Wizard" dialog (make sure that "SRPositionDLL2" box is checked). Insert the "SRPositionDLL2" from "Analysis Techniques" list to the chart you are working with

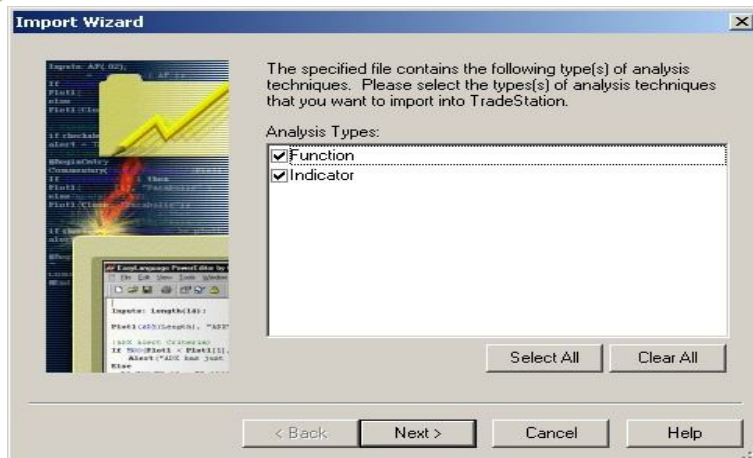


Figure 3: Import SRPOSITIONDLL.ELD wizard

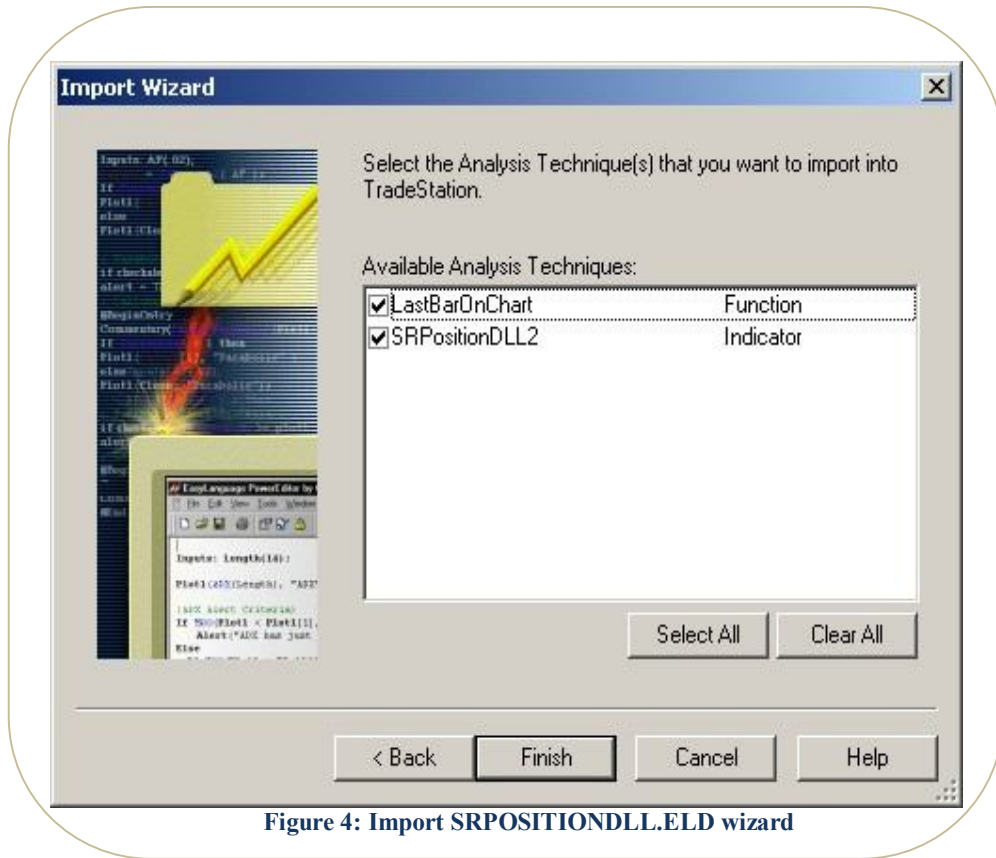


Figure 4: Import SRPOSITIONDLL.ELD wizard

- Go to the "Format Analysis Techniques" from the main menu -> Format or from the right click ->popup menu option, and format it according to your needs (figure 5 and 6). Make sure that in "Inputs" tab you enter (in quotes) are the exact same as "Strategy Name" that you have defined in Trade Station and the "Contract Name" is identical to the one shown in the Console (e.g. "EUR-USD" please note that the contract name must be identical to the SR console name).

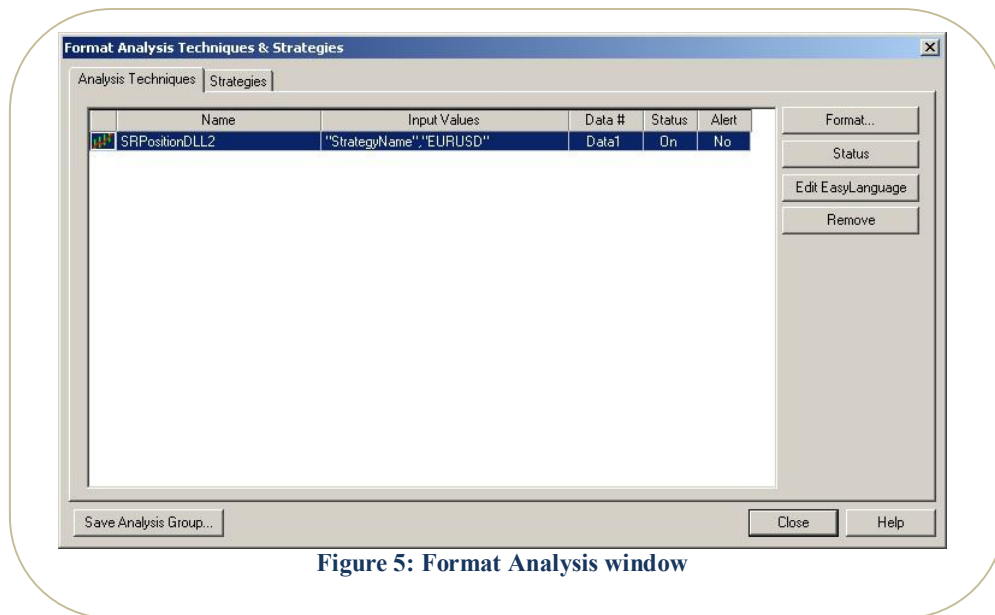


Figure 5: Format Analysis window

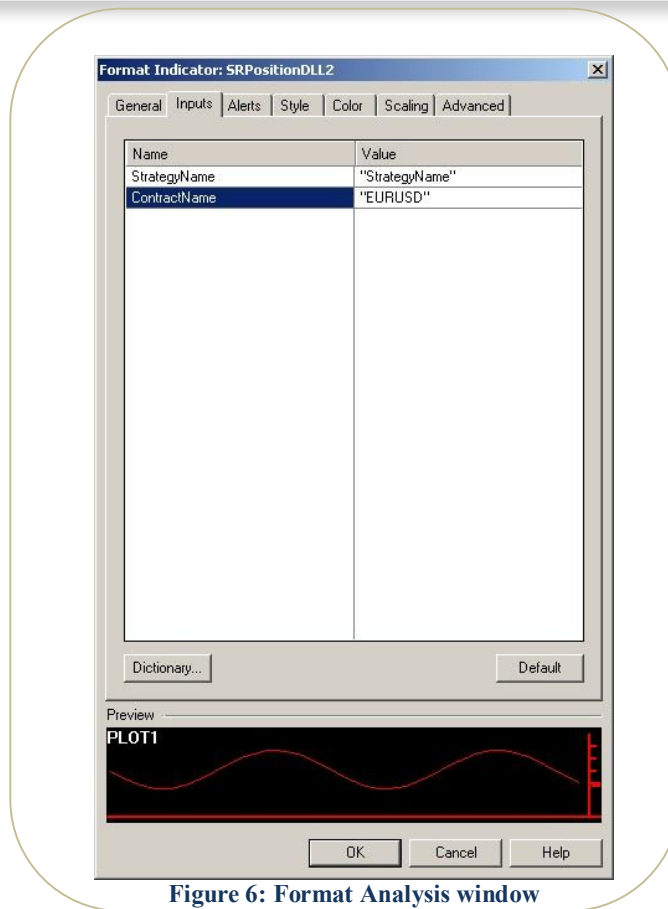


Figure 6: Format Analysis window

4. Make sure that in "General" tab, you can see the name "SRPositionDLL2"

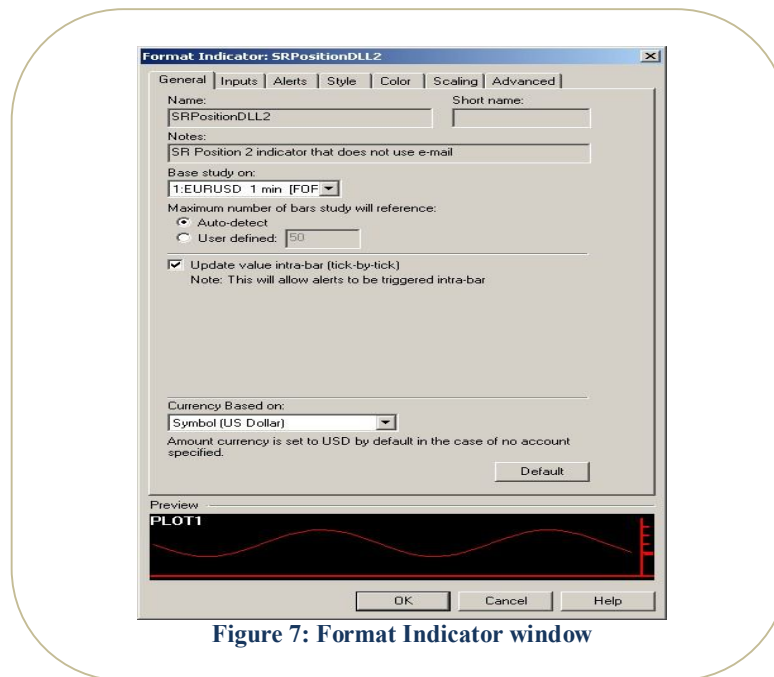


Figure 7: Format Indicator window

Troubleshooting

1. If you cannot find the file "SRPOSITIONDLL2.ELD", please repeat "**Step 1: configuring Strategy Runner Console**", that step is responsible for creating that file.
2. If during the SRPOSITIONDLL2.ELD import wizard, you are getting warning messages about previous copies or opened application, click on the "OK" button and continue its execution
3. In step 2 adding the SRPositionDLL2 to the selected chart is done by selecting the file and clicking on the "OK" button

If you facing technical issues, please don't hesitate to contact our support department

Tel (US toll free): 1-866-312-1184
Tel (CANADA Toll Free): 1-877-863-8589
Fax (US): 1-586 314 5050
Email: support@strategyrunner.com