



Running your Excel based strategy using Strategy Runner's SAS solution

Prerequisites:

- Microsoft Excel installed on your local computer
- Strategy Runner SAS Ver. 3.2
- Strategy Runner Console
- SAS account in Strategy Runner

Step 1: Configuring your Strategy in excel document

- Open excel spreadsheet and define your strategy algorithm (you can use Marcos, VBS or any other logic for that matter)
- Make sure to designate the following fields: for example

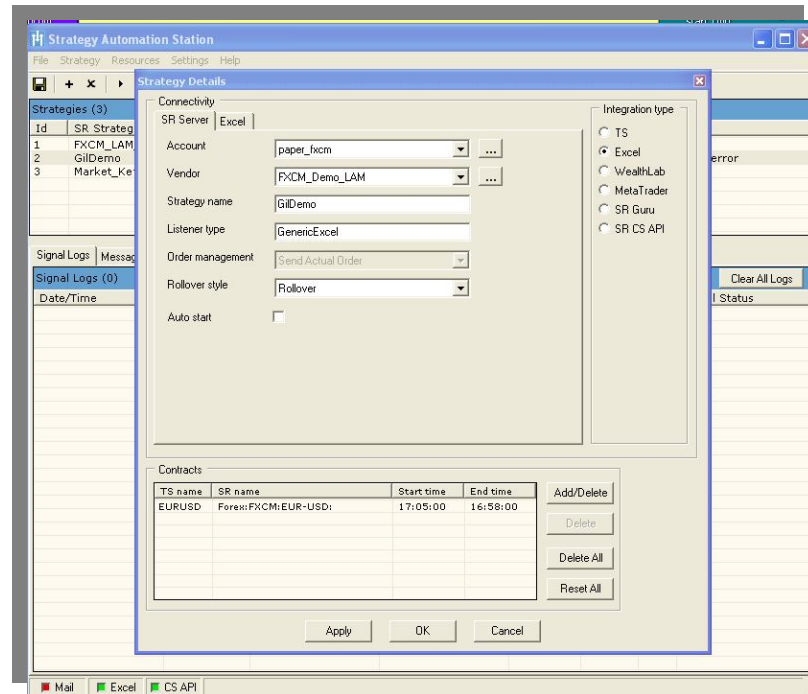
Feed	Field (cell)	Entry Market	Field (cell)
Price	A4	Price	B4
Lots	A5	Lots	B5
Fill Price	A6	Fill Price	B6
Fill Lots	A7	Fill Lots	B7
Fill Time	A8	Fill Time	B8

- Rename the spreadsheet and enter meaningful name
- Save your excel document on your local disk

Step 2: Configuring your SAS

Comment: This Step can be performed by Strategy Runner call center via remote access

- Open your local copy of SAS
- In the menu, select "Add Strategy" from the "Strategy" menu option
- Select the "Excel" radio button on the right side of the screen
- In the "Strategy Details" window set the following fields:

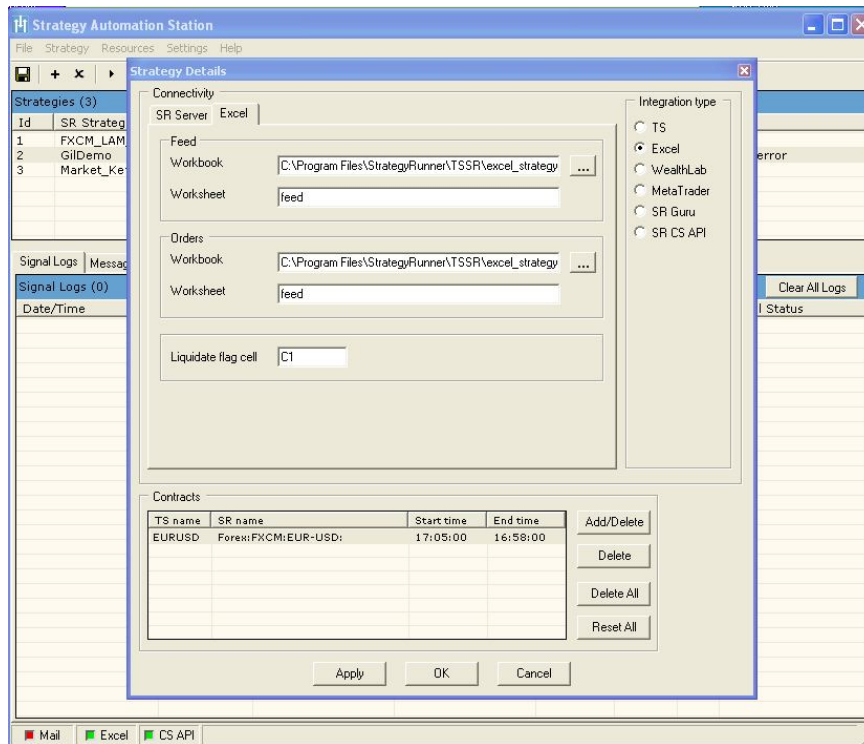


- ✓ "Account Name" – select the relevant account
- ✓ "Vendor" – select from the list of available vendors
- ✓ "Strategy Name" – type in the strategy unique name
- ✓ "Listener type" – is set by selecting the "Excel" radio button
- ✓ "Rollover style" – select the desired rollover style for your strategy

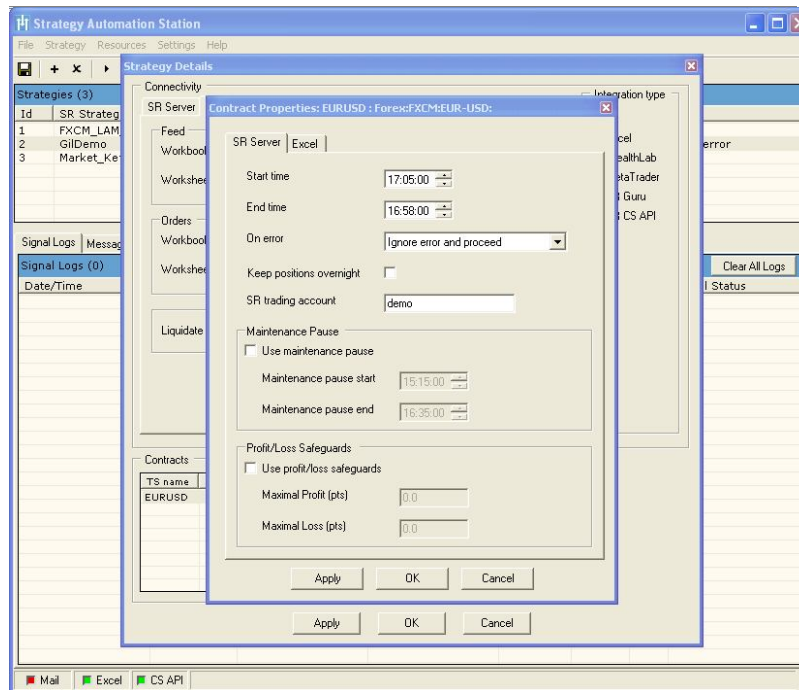
In the "Contracts" section, click the "Add/Delete" contracts to the contracts table
These are the contracts for which your strategy will produce trading signals.

Next switch to the "Excel" tab and complete the following settings:

- ✓ "Workbook" – brows to your saved excel file (generated in step 1)
- ✓ "Worksheet" – enter the worksheet name (generated in step 1)
- ✓ "Liquidate flag cell" – enter the cell that will hold that flag

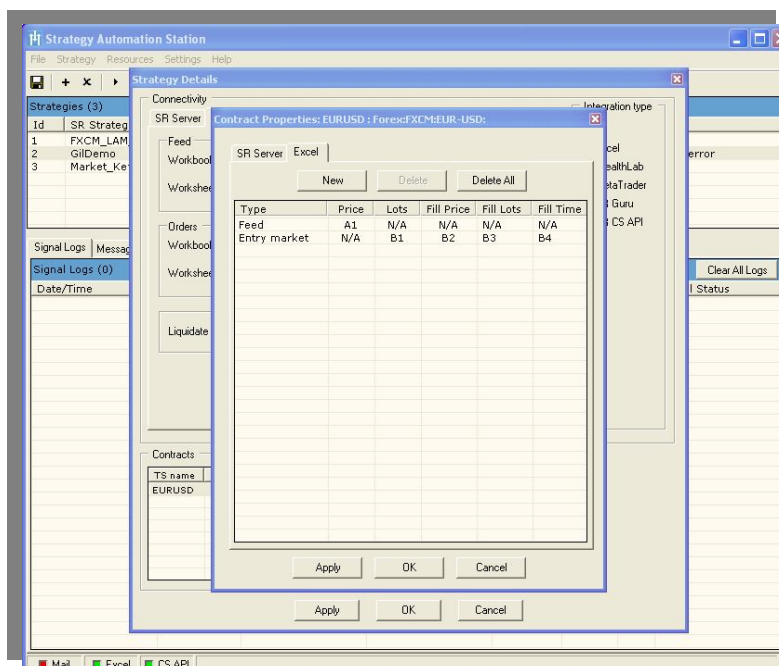


Double click on the contract name in the Contract table and set the following:



- ✓ "Start time" – set the strategy starting time
- ✓ "End time" – set the strategy ending time

- ✓ "On error" – set the desired action upon error
- ✓ "Keep positions overnight" – check if you wish to have over night position
- ✓ "Maintenance Pause" (optional) set the maintenance schedule
- ✓ "Profit/Loss Safeguards" – set the maximum loss and profit for the strategy



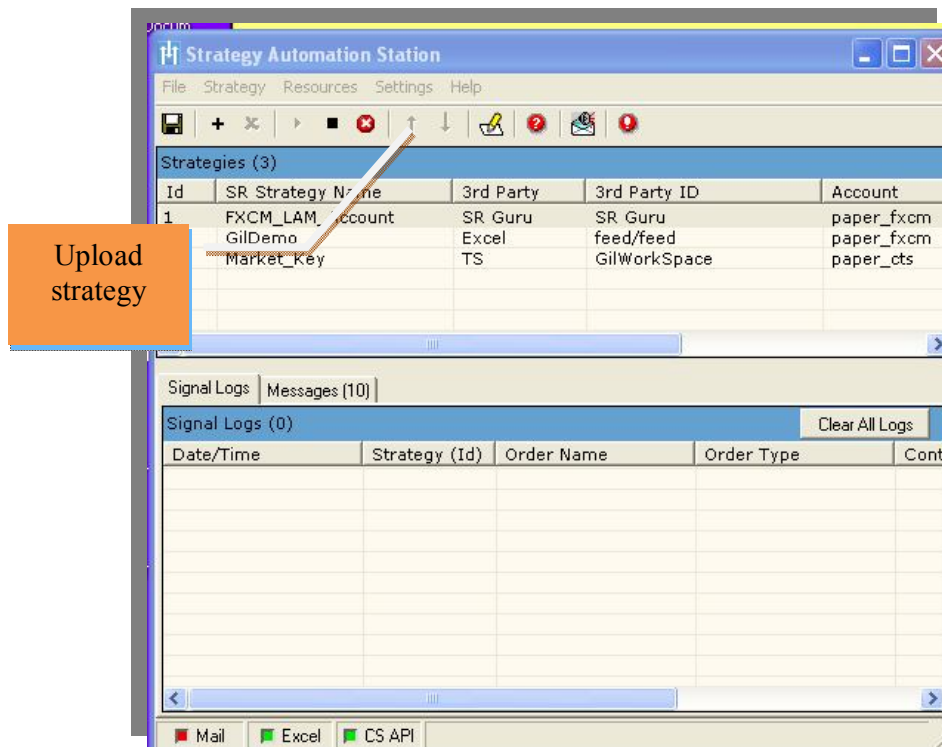
Switch to the "Excel" tab to set your strategy details, click the "New" button and enter the fields as specified in step 1. Click the "Apply" button to save all your changes

Step 3: Controlling the strategy execution

Once you complete setting your strategy, you need to upload it to the Strategy Runner Server. In order to do that you have to select the new strategy from the SAS main screen and select the "up arrow" from the toolbar

Activating: In the SAS main page, right click on the strategy you just created and from the popup menu select "Run Selected" from the popup menu to activate the strategy

Deactivating: Right click on the strategy you wish to deactivate, and from the popup menu – select "Stop Selected" from the popup menu option to stop the running strategy



If you are facing technical issues, please don't hesitate to contact our support department

Tel (US toll free): 1-866-312-1184
 Tel (CANADA Toll Free): 1-877-863-8589
 Fax (US): 1-586 314 5050
 Email: support@strategyrunner.com